

25  
26

DeLONG®

# AWARD JACKETS



Set-In Sleeves



Sleeve	Size	Lining	Style
Leather	Adult	Nylon	111A
	Adult	Quilt	211A
	Youth	Nylon	121A
	Youth	Quilt	221A
Wool	Adult	Nylon	116A
	Adult	Quilt	216A
	Youth	Nylon	126A
	Youth	Quilt	226A
Vinyl	Adult	Nylon	114A
	Adult	Quilt	214A
	Youth	Nylon	124A
	Youth	Quilt	224A

Email  
sales@delongsports.com



### Jacket Features

- Heavyweight Melton Wool (80% wool/20% nylon)
- Set-in Sleeves
- Quilt or Nylon Lining
- Leather, Vinyl, or Wool Sleeves
- Zip-down lining standard & now includes left chest inside pocket. Optional closed lining available for extra charge.
- Refer to price list for options
- Sizes: Adult XS-6XL  
Youth XS-XL



# DeLong Sportswear



Sleeve	Size	Lining	Style
Leather	Adult	Nylon	141A
	Adult	Quilt	241A
	Youth	Nylon	151A
	Youth	Quilt	251A
Wool	Adult	Nylon	146A
	Adult	Quilt	246A
	Youth	Nylon	156A
	Youth	Quilt	256A
Vinyl	Adult	Nylon	144A
	Adult	Quilt	244A
	Youth	Nylon	154A
	Youth	Quilt	254A



Raglan Sleeves



## Jacket Features

- Heavyweight Melton Wool (80% wool/20% nylon)
- Raglan Sleeves
- Quilt or Nylon Lining
- Leather, Vinyl, or Wool Sleeves
- Zip-down lining standard & now includes left chest inside pocket. Optional closed lining available for extra charge.
- Refer to price list for options
- Sizes: Adult XS–6XL  
Youth XS–XL

*Award Jackets*  
www.delongsports.com



## Shoulder Insert

### Two piece with opt. cording

Sleeve	Size	Lining	Style
Wool	Adult	Nylon	173A
	Adult	Quilt	273A
Leather	Adult	Nylon	172A
	Adult	Quilt	272A

### One piece insert

Sleeve	Size	Lining	Style
Wool	Adult	Nylon	175A
	Adult	Quilt	275A
Leather	Adult	Nylon	174A
	Adult	Quilt	274A
Vinyl	Adult	Nylon	180A
	Adult	Quilt	280A

### Leather with contrasting overlay

Sleeve	Size	Lining	Style
Wool	Adult	Nylon	179A
	Adult	Quilt	279A
Leather	Adult	Nylon	178A
	Adult	Quilt	278A

### Knit with cording (not pictured)

Sleeve	Size	Lining	Style
Leather	Adult	Nylon	176A
	Adult	Quilt	276A

### Three piece leather (not pictured)

Sleeve	Size	Lining	Style
Wool	Adult	Nylon	170A
	Adult	Quilt	270A
Leather	Adult	Nylon	177A
	Adult	Quilt	277A



- Heavyweight Melton Wool (80% wool/20% nylon)
- Set-in Sleeves

### Jacket Features

- Quilt or Nylon Lining
- Zip down lining standard & now includes left chest inside pocket. Optional closed lining available for extra charge.
- Refer to price list for options
- Sizes: Adult XS-6XL Youth XS-XL

\*Full Leather inserts sewn all the way through the armpit also available. See price list for available styles listed as Full 360 Inserts.



# DeLong Sportswear

DeLONG®

**Set-in Sleeve**

Sleeve	Size	Lining	Style
Leather	Adult	Nylon	118A
	Adult	Quilt	218A
Wool	Adult	Nylon	117A
	Adult	Quilt	217A
Vinyl	Adult	Nylon	112A
	Adult	Quilt	212A

**Raglan Sleeve**

Sleeve	Size	Lining	Style
Leather	Adult	Nylon	148A
	Adult	Quilt	248A
Wool	Adult	Nylon	147A
	Adult	Quilt	247A
Vinyl	Adult	Nylon	142A
	Adult	Quilt	242A



**All-Leather Body/Sleeves with Knit Waist**

Sleeve	Back	Size	Lining	
Set-In	1 pc	Adult	Nylon	198A
	1 pc	Adult	Quilt	298A
Raglan	1 pc	Adult	Nylon	195A
	1 pc	Adult	Quilt	295A



**Jacket Features**

- Quilt or Nylon Lining
- Standard snap closure (zipper optional)
- Knit cuffs and waist
- Optional leather cuffs
- Optional leather arm bands (two 1" stripes around bicep)
- Zip-down lining standard & now includes left chest inside pocket. Optional closed lining available for extra charge.
- Sizes: Adult XS-6XL

Finger Tip

All Leather

*Award Jackets*  
www.delongsports.com

5



## Three Color Sleeve

### Three Color Set-in Sleeve

Sleeve	Size	Lining	Style
Leather	Adult	Nylon	167A
	Adult	Quilt	267A
Vinyl	Adult	Nylon	168A
	Adult	Quilt	268A

### Jacket Features

- Heavyweight Melton Wool (80% wool/20% nylon)
- Set-in Sleeves
- Leather or Vinyl 3-color Sleeves
- Zip-down lining standard & now includes left chest inside pocket. Optional closed lining available for extra charge.
- Refer to price list for options
- Sizes: Adult XS-6XL



1. Main Outer Sleeve
2. Inside Upper Sleeve
3. Inside Lower Sleeve

## Petite Women's Cut



Slim, fitted cut designed specifically for petite women.  
Set-in sleeves only. Form fitting.

Sleeve	Size	Lining	Style
Leather	Adult	Nylon	111W
	Adult	Quilt	211W
Wool	Adult	Nylon	116W
	Adult	Quilt	216W
Vinyl	Adult	Nylon	114W
	Adult	Quilt	214W

### Jacket Features

- Heavyweight Melton Wool (80% wool/20% nylon)
- Set-in Sleeves
- Leather, Vinyl, or Wool Sleeves
- Zip-down lining standard & now includes left chest inside pocket. Optional closed lining available for extra charge.
- Refer to price list for options
- Sizes: Adult XS-2XL



## Blankets



### Blanket Features

- Heavyweight Melton Wool (80% wool/20% nylon)
- Matching or contrasting Soft Felt binding
- Style 472 ..... 60" x 72"
- Style 478 ..... 60" x 78"

## Sweaters



### Sweater Features

- 100% 3 ply acrylic knit fabric with full V-neckline and 16 color combinations.
- Unisex sizing: XS-3X
- Style SW110: Normal buttons left over right
- Style SW110W: Reversed buttons right over left

### Options Include:

- Body color
- Sleeve stripes (up to 4 each sleeve-EXTRA)
- Placket/border color
- Button color
- Pocket color

### Color Choices:

- Black
- Cardinal
- Columbia Blue
- Dk. Maroon
- Forest
- Gold
- Grey
- Kelly
- Lt. Vegas
- Navy
- Orange
- Purple
- Royal #47 (standard)
- Royal #12 (dark)
- Scarlet
- White

To SEE your sweater design, use the **Apparel Builder!**



<https://www.delongsports.com/delong/outerwear-designer.php>

*Award Jackets*

[www.delongsports.com](http://www.delongsports.com)





\*Style #1 Sailor Collar



\*Style #2 Zip-Divided Hood  
\*Style #2B Zip-Divided Hood  
without snaps



\*Style #3 Zip Sailor Collar

White-56 hood and sailor collars are standard using Fleece fabric. Braid is optional in 1 or 2 colors



Style #G "Whiting Rolled Style"  
Single ply rib knit trim with  
rolled cuffs



Style #7 Knit Stand-up Collar,  
no charge, Standard Collar



Style #8 Knit Byron Collar



Style #4 Wool Byron Collar-Matching  
or Contrasting



Style #H 3-Piece Hoodie  
1st color is inside of hood,  
2nd color is outside.



Cuff - Leather, Vinyl, Wool  
Snap on cuff matches jacket front  
snap color

Other Byrons not pictured:

Style #5 Leather Byron Collar

Style #15 Byron Collar, Wool Upside/Top, Leather Underside/Down

Style #16 Byron Collar, Leather Upside/Top, Wool Underside/Down will match body color

Style #LT Wool/Leather Tipped Edge

Style #L Rounded Byron Leather



# DeLong Sportswear



## Colors and Knits

COLOR CHART	Genuine Leather	Vinyl	Wool	Knits
Academy Blue #42	X		X	X
Black #51	X	X	X	X
Bone #TP	X			
Brown #44	X		X	X
Buck Tan (Old Gold) #14	X	X		
Burnt Orange #03	X			
Cardinal #79	X		X	X
Celtic Green #CG	X			
Columbia Blue #52	X	X	X	X
Cranberry #89			X	X
Cream #05	X	X		
Dark Columbia #09			X	X
Dark Green #AC			X	X
Dark Kelly #36			X	X
Dark Royal #73			X	X
Dark Red #DR			X	X
Dolphin Blue #07			X	X
Dark Forest #67	X	X	X	X
Gold #53	X	X	X	X
Grey #58	X	X	X	X
Kelly #57	X	X	X	X
Light Cardinal #39			X	X
Light Cream #20	X			
Forest #R7			X	X
Light Grey #LG	X		X	X
Navy #6N			X	X
Maroon #R8			X	X
Old Gold #63			X	X
Light Royal 10	X			
Light Scarlet #49			X	X
Light Silver #61	X			
Mariner #MB			X	X
Dark Maroon #59	X	X	X	X
Military Navy #46			X	X
Natural #55	X	X		X
Dark Navy/Navy #62	X	X		
New Gold #4J	X	X		
N.W. Purple #37			X	X
Ocean Blue #45	X		X	X
Optic Bright White #OP	X			
Orange #54	X	X	X	X
Palomino #04	X			
Purple #66	X	X	X	X
Light Purple #26			X	X
Red #2A			X	
Royal Blue #72	X	X	X	X
Royal B4 #90			X	X
Royal 27 #32			X	X
Scarlet #69	X	X	X	X
Teal Blue #27	X		X	X
Tennessee Orange #48			X	X
Texas Orange #64			X	X
True Navy #TN			X	X
Vanilla #VA	X			
Vegas Gold #43	X		X	X
White #56	X	X		X
Off White Wool #W6			X	X

Colors are a standard representation and are not an exact match. They will vary from fabric to fabric. Please call if you need color swatches

## Adult Jacket Sizes

XS	S	M	L	XL	2XL	3XL	4XL	5XL	6XL
30-32	34-36	38-40	42-44	46-48	50-52	54-56	58-60	62-64	66-68

3X-6X extra. See price list.

Shorts are 2" shorter in body and/or sleeve .....Extra. See price list  
X-Shorts are 4" shorter in sleeve only .....Extra. See price list  
Longs are 2" longer in body and/or sleeve .....Extra. See price list  
X-Longs are 4" longer in body and/or sleeve .....Extra. See price list

## Youth Jacket Sizes

XS	S	M	L	XL
4	6-8	10-12	14-16	18-20

Shorts are 2" shorter in body and/or sleeve ..... N/C  
Longs are 2" longer in body and/or sleeve .....Extra. See price list  
X-Longs are 4" longer in body and/or sleeve .....Extra. See price list

## Knit Patterns



Pattern 2 (3-color)



Pattern 3 (2-color)



Pattern 4 (2-color)



Pattern 5 (2-color)



Pattern 7 (2-color)



Pattern 8 (3-color)



Pattern 9 (3-color)



Pattern A (2-color)



Pattern S (Solid)



Pattern T (3-color)



Pattern 7X (2 or 3-color)



Pattern 53 (3-color)



Pattern 13 (2 or 3-color)

Please provide sequence from closest to body first.

1" braid is available on  
Sailor Collars and Zip-Divided Hoods  
shown in patterns S and 7 above.

### No Minimums

Orders only call 1-877-820-0916

OR

Fax 1-800-998-1904

OR

Email [sales@delongsports.com](mailto:sales@delongsports.com)

See price list for any additional charges.

*Award Jackets*  
[www.delongsports.com](http://www.delongsports.com)



### ORDERING INFORMATION

We've made ordering easy! Just follow this process to be assured your order is complete.

### JACKETS

1. Select the jacket style number.
2. Select the body color number.
3. Select shoulder insert color (if applicable). When ordering the shoulder insert, first color is one closest to the neck.
4. Select the sleeve color number
5. Select pocket trim color number. Otherwise, pocket color will automatically match sleeve color.
6. Select one knit trim pattern number for collar, cuffs and waistband. Optional self-material cuff, extra.
7. Select knit trim colors in order—first color is always closest to body of the jacket.
8. Snap closure is standard. If selected, specify color. Heavy gauge Delrin zipper is available, extra. Specify option Z.
9. Snaps may be reversed for women at no extra charge. Specify option R.
10. Select collar style number.
11. For #1 and #3 Sailor, #2 Zip-Divided Hood, and #H Three-Piece Hoodie, and \$4 Byron collars only, select color number for up side and down side.
12. For #1/#3 Sailor Collars and #2/#2B Zip-Divided Hoods only, select braid pattern & colors if desired (available in patterns 7 and S only).
13. Zip-down lining, standard. Optional closed lining available, use code XZ. If lining option is not specified jackets will have a zip-down lining.
14. Indicate the quantity of each size. See size chart on page 10.
15. List total quantity of jackets ordered.
16. DeLONG will sew on emblems if furnished. Send your emblems to Owatonna, Minn. Upon receipt of the emblems, we will enter your order. There is a sew-on charge for this service.

### PRE-DEFINED JACKETS

If you frequently order the same style and color specifications for each school, we can pre-load this information for easy ordering. Simply give us the Pre-Defined re-order name you wish to use, and we will load this for future orders.

### ORDERING ONLINE

Ordering yourself online is easy and gives you our fastest delivery possible. We have the most commonly used styles and options available on our Jacketshop online ordering tool plus all your Pre-Defined Jackets. Contact us for details.

### BLANKETS

1. Select the style number.
2. Select the blanket color.
3. Select the binding color.
4. List the total quantity of blankets ordered.
5. DeLONG will sew on emblems if furnished. Send your emblems directly to Owatonna, Minn. Upon receipt of the emblems, we will enter your order. There is a sew-on charge for this service.

### RETURNS

Contact returns at [Care@delongsports.com](mailto:Care@delongsports.com)  
Provide Order Number / Customer Number  
Description of what is wrong or needs changed



1-877-820-0916

DEALER LOGIN

[Home](#) [Award Jackets & Blankets](#) [School Letters and Patches](#) [Outerwear](#) [Fleece](#) [Decorations](#) [Flyers](#) [Catalogs and Order Forms](#) [Company](#)

### Your One Source Award Jacket Manufacturer

**Award Jackets** - Simplify the order process and ensure color accuracy while cutting cost and time for delivery. [More >...](#)



*Supplying the Sporting Goods market for over fifty years.*

DEALER PROGRAM



# DeLONG®

## STOCK AWARD JACKETS



Style 211S	Design 01
Wool body – quilt lined	Black – 51
Leather sleeve & pocket trim	Black – 51
Knit trim pattern	S
Knit main color	Black – 51



Style 211S	Design 06
Wool body – quilt lined	Black – 51
Leather sleeve & pocket trim	Black – 51
Knit trim pattern	4
Knit main color	Black – 51
Stripe color	Scarlet – 69



Style 211S	Design 02
Wool body – quilt lined	Black – 51
Leather sleeve & pocket trim	Black – 51
Knit trim pattern	4
Knit main color	Black – 51
Stripe color	Orange – 54



Style 211S	Design 15
Wool body – quilt lined	Scarlet – 69
Leather sleeve & pocket trim	White – 56
Knit trim pattern	4
Knit main color	Scarlet – 69
Stripe color	White – 56



Style 211S	Design 03
Wool body – quilt lined	Black – 51
Leather sleeve & pocket trim	Black – 51
Knit trim pattern	4
Knit main color	Black – 51
Stripe color	Gold – 53



Style 211S	Design 16
Wool body – quilt lined	Scarlet – 69
Leather sleeve & pocket trim	Black – 51
Knit trim pattern	2
Knit main color	Scarlet – 69
Feather stripe	White – 56
Stripe color	Black – 51



Style 211S	Design 04
211S	Quilt Lined
Wool body – quilt lined	Black – 51
Leather sleeve & pocket trim	Black – 51
Knit trim pattern	2
Knit main color	Black – 51
Feather stripe	White – 56
Stripe color	Orange – 54



Style 211S	Design 18
Wool body – quilt lined	Royal – 72
Leather sleeve & pocket trim	White – 56
Knit trim pattern	4
Knit main color	Royal – 72
Stripe color	White – 56



Style 211S	Design 05
Wool body – quilt lined	Black – 51
Leather sleeve & pocket trim	Black – 51
Knit trim pattern	2
Knit main color	Black – 51
Feather stripe	White – 56
Stripe color	Scarlet – 69



Style 211S	Design 27
Wool body – quilt lined	Kelly – 57
Leather sleeve & pocket trim	Optic White – OP
Knit trim pattern	4
Knit main color	Kelly – 57
Stripe color	White – 56





Style 211S	Design 28
Wool body – quilt lined	Maroon – R8
Leather sleeve & pocket trim Optic White – OP	
Knit trim pattern	4
Knit main color	Maroon – R8
Stripe color	White – 56



Style 211S	Design 35
Wool body – quilt lined	Scarlet – 69
Leather sleeve & pocket trim Optic White – OP	
Knit trim pattern	4
Knit main color	Scarlet – 69
Stripe color	White – 56



Style 211S	Design 38
Wool body – quilt lined	Royal – 72
Leather sleeve & pocket trim Optic White – OP	
Knit trim pattern	4
Knit main color	Royal – 72
Stripe color	White – 56

### ORDERING INFORMATION

1. Jacket style number 211S.
2. Select the design number.
3. Select snap color. Snaps may be reversed for women, specify option R.
4. Indicate the quantity of each size. See size chart (regular lengths only).
5. Orders will ship in 24–48 hours after credit approval.
6. Artwork is not available for in-stock jackets.
7. Private Labeling is not available for in-stock jackets.
8. We are occasionally out of stock. Out of stock will be made as custom with normal custom jacket lead time.

### ADULT JACKET SIZES

S	M	L	XL	2XL
34–36	38–40	42–44	46–48	50–52

All our stock jackets can easily be ordered online at your convenience.  
Ask your DeLong Representative or our Customer Service Team for details.

## Zip-Down Lining

### Step 1



### Step 2



### Zip-Down Lining

DeLong jackets now come standard with zip-down lining. This gives you the opportunity to add decoration to any jacket whether it's the first time the jacket is being decorated or whether your customer has brought it back for additional sew-ons or decoration.

### Step 3



### Final



### Step 1

Unzip the lining

### Step 2

Reach between the lining and the jacket to the bottom of each sleeve and grab the lining and pull it through so the lining (sleeve) is completely inside out. The lining drops down giving you access to the whole jacket.

### Step 3

Apply your decoration and turn the jacket right-side out and zip lining.



# DeLONG®



## SHIPPING

- Current Blank Letter Jackets Shipping in 2–3 Weeks
- Decorated Letter Jackets Shipping 5–7 Weeks
  - Once Art Is Approved
- New Art–5 days to Create
- Custom Chenille in 3–4 Weeks

## HELP/FAQ

- Orders/General Questions [sales@delongsports.com](mailto:sales@delongsports.com)
- Custom Patch Builder: [www.delongsports.com](http://www.delongsports.com)
- Order Forms: [www.delongsports.com](http://www.delongsports.com)
- New Account Registration: [www.delongsports.com](http://www.delongsports.com)
- Phone (877) 820-0916 (8:30–4:30) Central Time

## RETURN POLICY

- Returns must be communicated through [care@delongsports.com](mailto:care@delongsports.com)
- Need
  - Customer #
  - Order Number (located in pocket)
  - Description of error
  - Photo of error

[www.delongsports.com](http://www.delongsports.com)

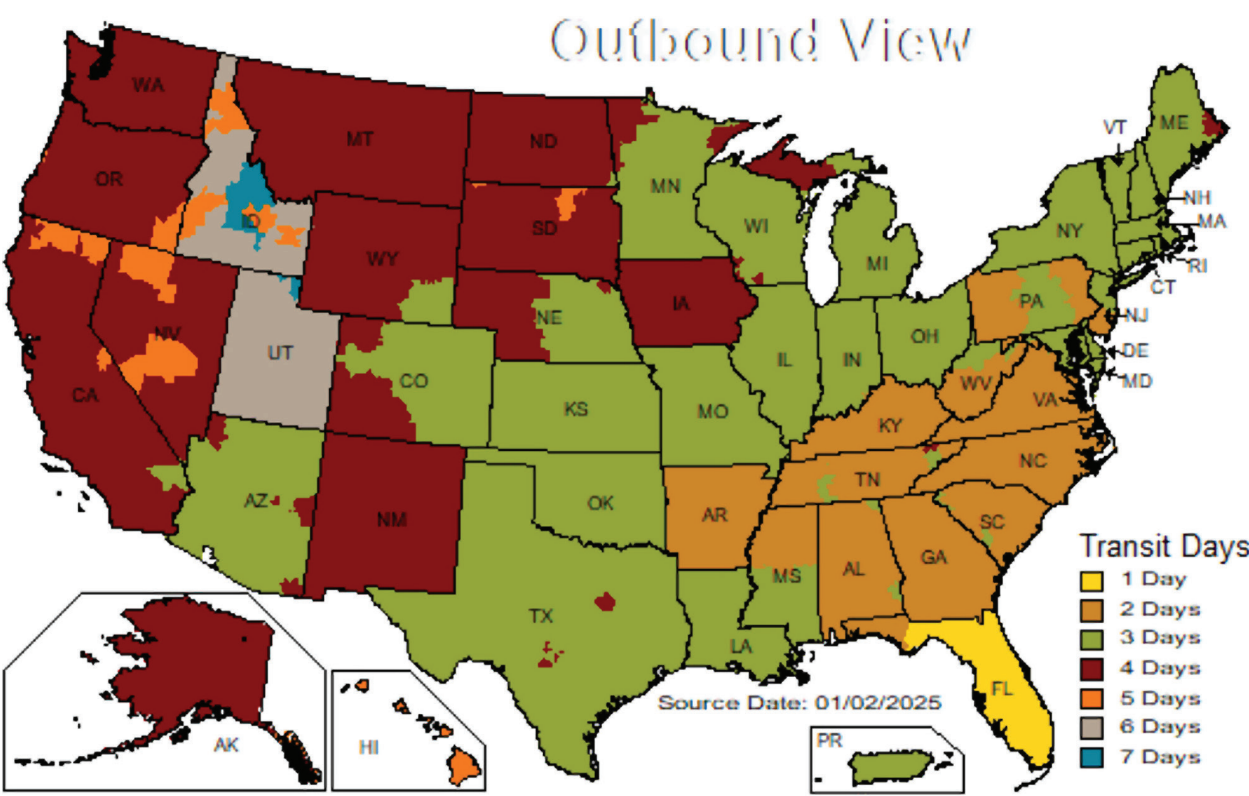


# TRANSIT DAYS FROM MIAMI

## U.S. Ground Maps

### Ship Date and Zip Code Results

Business days from: MIAMI, FL 33166







# CUSTOM. IT'S THE DELONG DIFFERENCE

Whether ordering loose chenille or having your jackets delivered fully decorated, DeLONG is your complete solution. Log in to your DeLONG Jacket Shop account and order decorated or blank jackets.



**GET THE BEST. GET DELONG.**

[sales@delongsports.com](mailto:sales@delongsports.com)

P: 877-820-0916 F: 800-998-1904

Try creating custom patches and letters on our new online builders.

Go to [www.delongsports.com](http://www.delongsports.com)

241966 (DL-001-26)



# DeLONG<sup>®</sup>

## AWARDS

PO Box 992 148 E Broadway St Owatonna, MN 55060 Page \_\_\_\_ of \_\_\_\_

DeLONG Customer No.

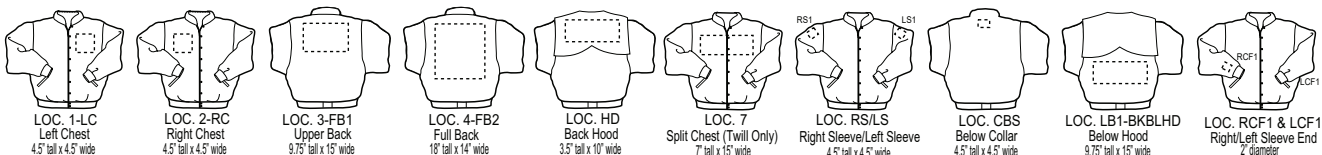
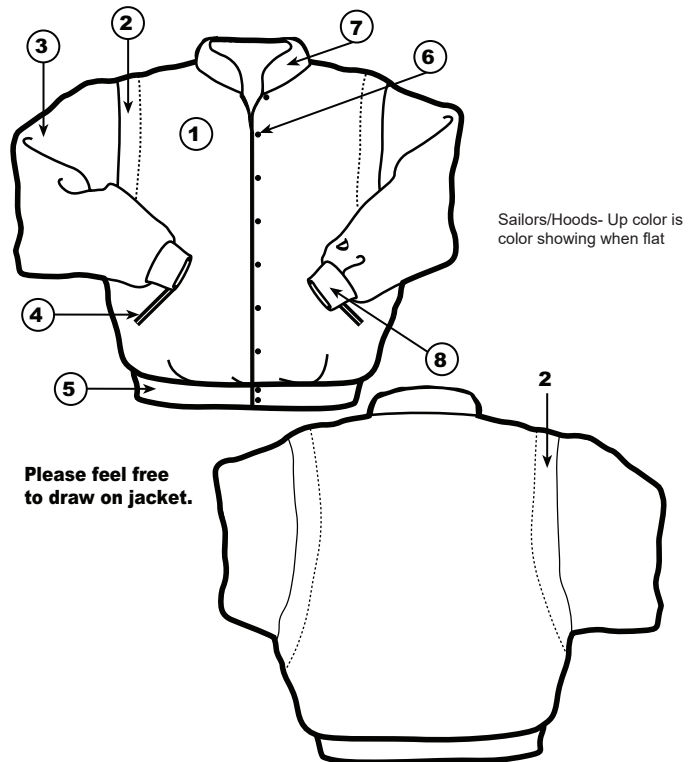
☐ AT-ONCE ☐ QUALIFYING ☐ PROOF

Submit to: [sales@delongsports.com](mailto:sales@delongsports.com) PH: 877-820-0916 FX: 800-998-1904

PO # \_\_\_\_\_

Bill to:		Ship to:	
		Mark for:	
email address:			
Date:	Ordered by:	Phone #	Fax #
Pre-Defined Name:			

AWARD JACKET STYLE # _____		
1	BODY	Color# _____
2	INSERT	1st Clr _____ 2nd Clr _____ 3rd Clr _____ Cord (opt) _____
3	SLEEVE	Color# _____ or _____ / _____ / _____ Front Top Bottom
4	POCKET	Color# _____ Fabric _____
5	KNITS	Pattern# _____ Color# _____ / _____ / _____
6	CLOSURE	Snaps <input type="checkbox"/> Color# _____ Reverse <input type="checkbox"/> or Zipper <input type="checkbox"/>
7	COLLAR	Style# _____ Color# _____ / _____ / _____ Up Down Hood Braid Pattern# _____ Color# _____ / _____ / _____
OPTIONS SKIP SECTION & LEAVE BLANK IF NO SPECIAL OPTIONS NEEDED		
8	SPECIAL CUFFS	Leather <input type="checkbox"/> Vinyl <input type="checkbox"/> Wool <input type="checkbox"/> Color _____ leave blank if using standard knit cuffs
9	ZIP LINING	Zip Down (Std) <input type="checkbox"/> Closed Lining Code: XZ <input type="checkbox"/> If lining option is not specified, jacket (where applicable) will have a zip down lining.
10	INSIDE POCKETS	Left <input type="checkbox"/> Right <input type="checkbox"/> Both <input type="checkbox"/>



XS	SM	MD	LG	XL	2X	3X	4X	5X	Body Length	Sleeve Length	Total

Size	Body Length	Sleeve Length	Total

Size	Body Length	Sleeve Length	Total

Miscellaneous Notes

--

Lengths: Regular=Leave Blank, P2=Long (+2"), P4=Extra Long (+4"), M2=Short (-2"), M4= Extra Short (-4"), Y=Youth see catalog for size ranges/upcharges

ART	If NEW artwork, write NEW for Artwork ID & attach artwork with color info. If Re-Order, provide previous order #														
Artwork ID# or Virtual Sample#	Size	Font	Lettering Design (Straight, Arch, Etc.)	Art Location	Wording	Color Sequence									
						FILL	OUTLINE	1	2	3	4	5	6	7	